

Mayfair Health Professional Building

3077 N Mayfair Road
Wauwatosa, WI

Medical, Medtail, and
Office Space for Lease



For more information please contact:

Tim Janusz
414-908-9155
tim.janusz@nmrk.com

Rachel Schmidt, CCIM
414-395-4691
rachel.schmidt@nmrk.com

NEWMARK





PROPERTY SUMMARY

±54,071 SF
BUILDING
SIZE

172
PARKING
SPACES

±1,994 RSF
1ST FLOOR SPACE AVAILABLE

Up To ±18,000 RSF
2ND FLOOR SPACE AVAILABLE STARTING 2026

Up To ±14,157 RSF
3RD FLOOR SPACE AVAILABLE

Negotiable
LEASE RATE

\$13.55
OPEX RATE

Monument and Building Façade
SIGNAGE



Property Highlights



Three-story building with opportunity for various medical uses and first floor Medtail at the outstanding corner location of Mayfair & Burleigh



Immediate availability for first and third floor suites



Professionally managed with numerous amenities steps away along Mayfair Road or at the Mayfair Collection



Close proximity to many hospitals and the Milwaukee Regional Medical Center



Updated common areas, new monument and wayfinding signage along with convenient Interstate access

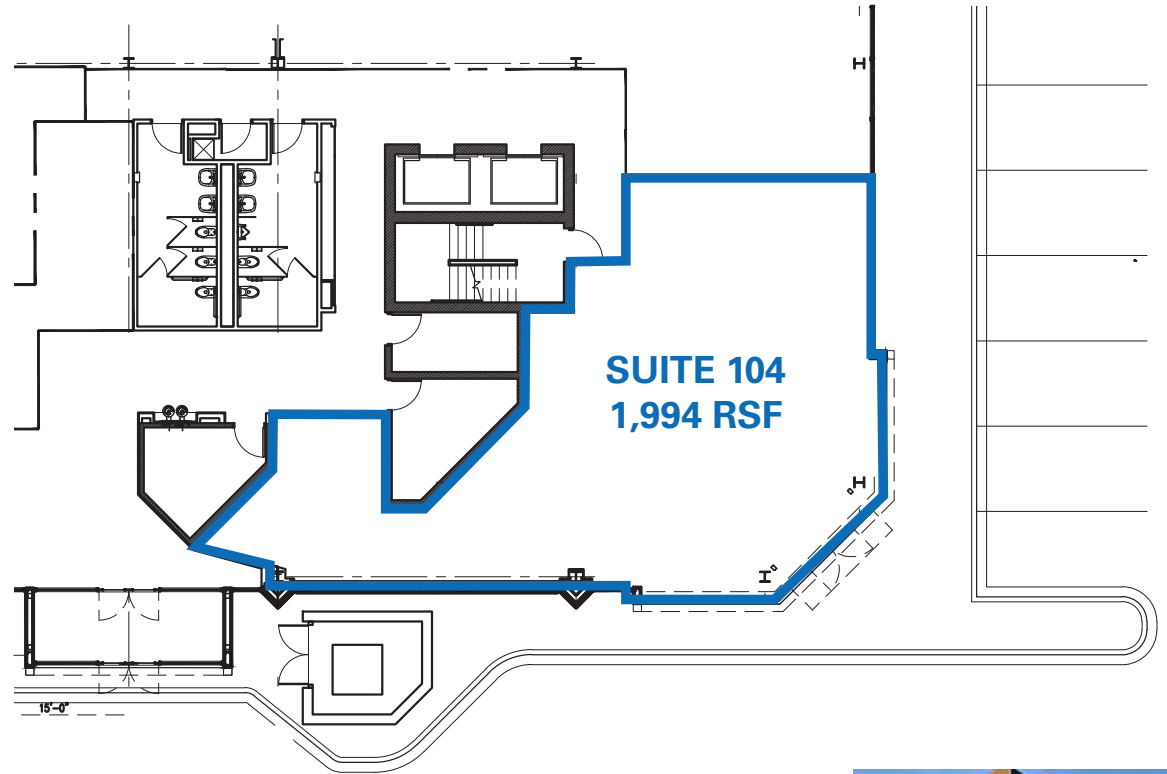


Tenant Improvement Allowance available with flexible terms

1ST FLOOR

±1,994 RSF

Suite 104



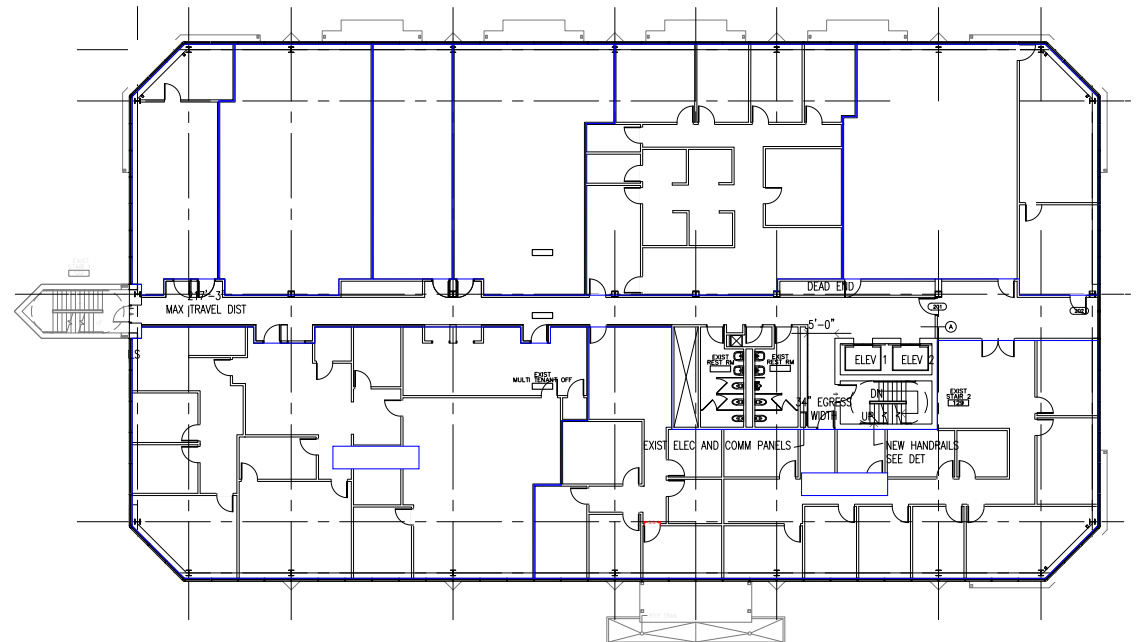
NEWMARK



2ND FLOOR

CONTACT BROKER

Existing Suites from 771 RSF to 4,264 RSF
Can accommodate tenants up to ±18,000 RSF



NEWMARK

3RD FLOOR

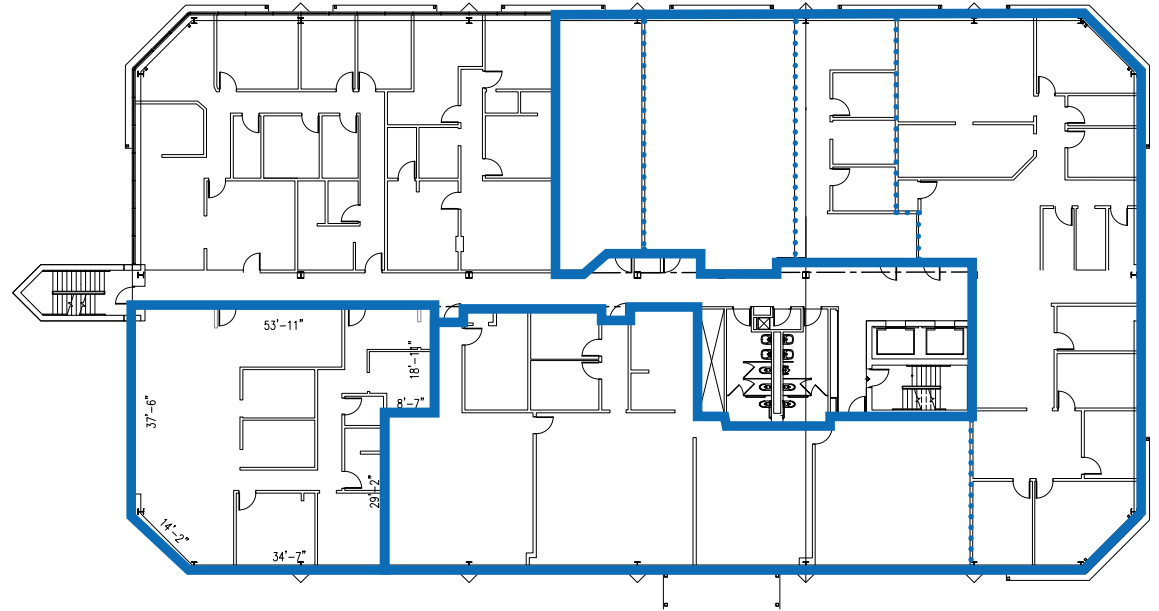
± 2,584 RSF
± 11,573 RSF

Suites 303 and 306
Contiguous to 14,157 RSF

Suite 306 currently has a clinical medical
buildout

Suite 303 can be divided into a variety of
suite sizes and buildouts

NEWMARK

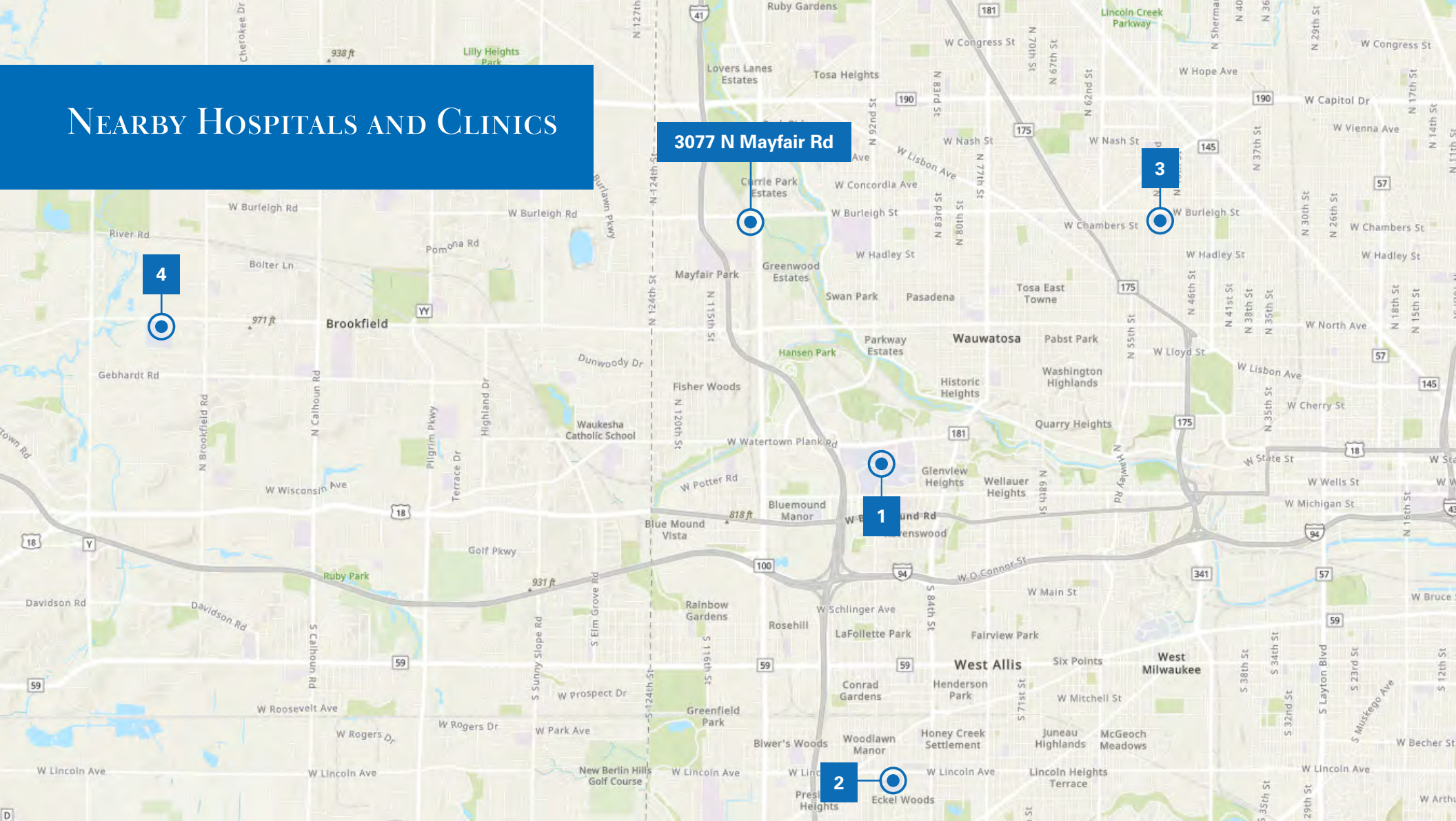


SUITE 306
2,584 RSF

SUITE 303
11,573 RSF
(Divisible)



NEARBY HOSPITALS AND CLINICS



3077 N Mayfair Rd

4

3

1

2

NEARBY HOSPITALS/CLINICS	DISTANCE	DRIVE TIME
1. Froedtert/Medical College/Children's Hospital	3.4 Mi	7 Mins
2. Aurora West Allis Medical Center	6.4 Mi	9 Mins
3. Ascension St. Joseph Hospital	3.8 Mi	8 Mins
4. Elmbrook Memorial Hospital	6.5 Mi	15 Mins



298,479
POPULATION
(5-Mile Radius)



\$96,889
AVERAGE
HOUSEHOLD
INCOME
(5-Mile Radius)

NEARBY AMENITIES

THE MAYFAIR COLLECTION



W BURLEIGH ST

W BURLEIGH ST



3077 N Mayfair Rd



100

MAYFAIR RD

MAYFAIR



N 124TH ST



W NORTH AVE



STATE OF WISCONSIN BROKER DISCLOSURE TO NON-RESIDENTIAL CUSTOMERS

Wisconsin law requires all real estate licensees to give the following information about brokerage services to prospective customers.

Prior to negotiating on your behalf the brokerage firm, or an agent associated with the firm, must provide you the following disclosure statement.

BROKER DISCLOSURE TO CUSTOMERS

You are the customer of the brokerage firm (hereinafter Firm). The Firm is either an agent of another party in the transaction or a subagent of another firm that is the agent of another party in the transaction. A broker or a salesperson acting on behalf of the Firm, may provide brokerage services to you. Whenever the Firm is providing brokerage services to you, the Firm and its brokers and salespersons (hereinafter Agents) owe you, the customer, the following duties:

- The duty to provide brokerage services to you fairly and honestly.
- The duty to exercise reasonable skill and care in providing brokerage services to you.
- The duty to provide you with accurate information about market conditions within a reasonable time if you request it, unless disclosure of the information is prohibited by law.
- The duty to disclose to you in writing certain Material Adverse Facts about a property, unless disclosure of the information is prohibited by law (see “Definition of Material Adverse Facts” below).
- The duty to protect your confidentiality. Unless the law requires it, the Firm and its Agents will not disclose your confidential information or the confidential information of other parties (see “Confidentiality Notice To Customers” below).
- The duty to safeguard trust funds and other property held by the Firm or its Agents.
- The duty, when negotiating, to present contract proposals in an objective and unbiased manner and disclose the advantages and disadvantages of the proposals.

Please review this information carefully. An agent of the Firm can answer your questions about brokerage services, but if you need legal advice, tax advice, or a professional property inspection, contact an attorney, tax advisor, or property inspector.

This disclosure is required by section 452.135 of the Wisconsin statutes and is for information only. It is a plain-language summary of a broker’s duties to a customer under section 452.133 (1) of the Wisconsin statutes.

CONFIDENTIALITY NOTICE TO CUSTOMERS

The Firm and its Agents will keep confidential any information given to the Firm or its Agents in confidence, or any information obtained by the Firm or its Agents that a reasonable person would want to be kept confidential, unless the information must be disclosed by law or you authorize the Firm to disclose particular information. The Firm and its Agents shall continue to keep the information confidential after the Firm is no longer providing brokerage services to you.

The following information is required to be disclosed by law:

1. Material Adverse Facts, as defined in section 452.01 (5g) of the Wisconsin statutes (see “definition of material adverse facts” below).
2. Any facts known by the Firm or its Agents that contradict any information included in a written inspection report on the property or real estate that is the subject of the transaction.

To ensure that the Firm and its Agents is aware of what specific information you consider confidential, you may list that information below or provide that information to the Firm or its Agents by other means. At a later time, you may also provide the Firm or its Agents with other information that you consider to be confidential.

CONFIDENTIAL INFORMATION: _____

NON-CONFIDENTIAL INFORMATION (The following information may be disclosed by the Firm and its Agents): _____

(INSERT INFORMATION YOU AUTHORIZE TO BE DISCLOSED SUCH AS FINANCIAL QUALIFICATION INFORMATION)

SEX OFFENDER REGISTRY

Notice: You may obtain information about the sex offender registry and persons registered with the registry by contacting the Wisconsin Department of Corrections on the Internet at <http://www.doc.wi.gov/> or by phone at 608-240-5830.

DEFINITION OF MATERIAL ADVERSE FACTS

A “Material Adverse Fact” is defined in Wis. Stat. 452.01 (5g) as an adverse fact that a party indicates is of such significance, or that is generally recognized by a competent licensee as being of such significance to a reasonable party, that it affects or would affect the party’s decision to enter into a contract or agreement concerning a transaction or affects or would affect the party’s decision about the terms of such a contract or agreement.

An “Adverse Fact” is defined in Wis. Stat. 452.01 (1e) as a condition or occurrence that a competent licensee generally recognizes will significantly and adversely affect the value of the property, significantly reduce the structural integrity of improvements to real estate, or present a significant health risk to occupants of the property; or information that indicates that a party to a transaction is not able to or does not intend to meet his or her obligations under a contract or agreement made concerning the transaction.

No representation is made as to the legal validity of any provision or the adequacy of any provision on any specific transaction.

Newmark Milwaukee Office

757 N Broadway, Suite 700
Milwaukee, WI 53202

Tim Janusz

Managing Director

t 414-908-9155
tim.janusz@nmrk.com

Rachel Schmidt, CCIM

Managing Director

t 414-395-4691
rachel.schmidt@nmrk.com

The information contained herein has been obtained from sources deemed reliable but has not been verified and no guarantee, warranty or representation, either express or implied, is made with respect to such information. Terms of sale or lease and availability are subject to change or withdrawal without notice.

NEWMARK